

NORMAN®
SHUTTERS. BLINDS. SHADES.

Finest Made to Measure
Window Furnishings



GOOD. BETTER. BEST.



Crafted especially for you.

Sit back and take in all the possibilities. Every element of a Norman finely crafted window furnishing is custom made, especially for you. Creating timeless quality and perfection, no other shutter, blind and shade maker is as innovative or can offer such diverse and dynamic choices. So, open up your imagination to a world of styles, designs, materials, textures and colours to create the perfect vision for your windows.

Quality isn't just a catchphrase, it's our Heritage.

With almost half a century of excellence in crafting fine window furnishings, Norman's quality has made it famous. It's what drives Norman to innovate and why you can see it in every detail. We cultivate our own forests, make our own components, and weave our own cords - at Norman everything matters, and anything is possible.



Shutters

From Woodlore "the democratic shutter for all walks of life" to Ultra "the best and most beautiful timber shutter in the world" Norman has the ideal shutter solution to suit every window, door and decor. Norman's wide range offers a "one stop shutter shop", covering every style, colour, shape, size, function and budget.

Top 10 Reasons Why

- 01. Reinforced Engineered Wood Stiles** - Multiple layers of hardwood veneer bonded together, strengthen the core of the stile providing a lifetime of durability and stability.
- 02. Quarter Sawn Wood Louvres** - Not the inferior flat-sawn louvres seen in regular wood shutters, Norman's quarter sawn louvres withstand the woods natural tendency to cup, twist and warp.
- 03. Mortise and Tenon Joinery** - Found only in fine crafted furniture, our mortise & tenon joints will help keep your shutters square and true guaranteeing long term functionality.
- 04. Superior Finishing** - Includes multiple hand sanding and finishing sequences for a richer and luxurious finish. In Woodlore, the polypropylene coating is medical grade quality, creating a healthy home and resists scratching, chipping, peeling and yellowing under the harsh Australian sun.
- 05. Prescription Wood Conditioning** - The moisture level in each wood shutter component is custom kiln dried to match the ambient moisture conditions of its final destination. This unique drying process improves the long-term stability of the shutter panels and frames once installed.
- 06. Invisible Tilt** - The louvres move in unison like magic with no visible tilt rod. Invisible Easy Tilt's gear driven system is built into each stile and operates louvres flawlessly with precision light and view control.
- 07. Environmentally Friendly and Safe** - All the materials chosen for Norman shutters are done with the environment and your family's safety in mind. From sustainable and legally sourced wood products to safe and recyclable high-grade polymers and wood composites. Nurtured from our forests to our factories to your home.
- 08. Recessed Magnets** - Recessed magnets are embedded into each stile to eliminate the gap between the shutter panel and shutter frame, creating a simple and clean look from every angle.
- 09. Decorative Accessories** - Decorative accessories to enhance the functionality of your shutters, including panel pulls, panel locks and hinges in a wide range of finishes.
- 10. Norman is the wisest choice for shutters** - We offer a 5 year 'No questions Asked' warranty on all our shutters. Dependable and high quality, Norman shutters are covered by a comprehensive warranty for extra peace of mind. The warranty that even covers life's little mishaps. If you break or damage it, we'll offer a one-time repair or replacement, for free with no questions asked! See full details on the Product Warranty page.



Choose with Confidence

Whichever product you choose, all our shutters are made with the Norman Promise. We build quality into every Norman product to ensure long-term performance and value. The result is a trouble-free product ownership experience. Norman stands behind all of its shutter products with a 5 year 'No Questions Asked' warranty.

Woodlore

- The World's best-selling shutter
- Made from an eco-friendly engineered wood composite (EWC) core coated with a medical grade polypropylene, providing the perfect finish for good looks, durability and water resistance
- Environmentally safe and exceeds the most stringent international safety standards
- Unbeatable value, our most affordable program
- Featuring the invisible Easy Tilt louvre drive option
- Choice of 9 contemporary white and earthy colours
- Available in 5 louvre sizes, 47mm, 63mm, 76mm, 89mm and 114mm

An iconic choice with renowned durability, strength and simplicity. Resists peeling, cracking, chipping and yellowing. No wonder it's the No.1 shutter among the world's homeowners. Now with a next-generation formulation utilising 30% more wood in Woodlore's premium engineered wood composite core - real wood in an advanced state - Woodlore is ever more stable and robust, and stronger than solid wood shutters, free from any of wood's naturally occurring imperfections and



has higher resistance to heat damage such as warping, sagging and cupping compared to PVC or vinyl shutters. It is also big on safety, VOC safe and CARB P2 compliant for off-gassing.

Woodlore features an exclusive patented medical-grade safe polypropylene coating with a UV inhibitor. Smooth, durable and robust, the coating provides extra protection against the knocks and bumps of today's busy family lifestyles and resists fading and yellowing under the harsh Australian sun.

Woodlore Plus

- Advanced strength, technology and options. It's Woodlore but more
- Louvres made with high grade recyclable ABS (Acrylonitrile Butadiene Styrene) built with aircraft inspired construction for maximum strength and stiffness. In good company, ABS is found in many premium auto exteriors and home appliances
- Woodlore (EWC) frames, stiles and rails
- Up to 20% wider panels than Woodlore available (920mm)
- Featuring the invisible Easy Tilt louvre drive option
- More colours with 26 solid painted finishes
- Available in 5 louvre sizes, 47mm, 63mm, 76mm, 89mm and 114mm

Woodlore Plus is a hybrid shutter utilising a lightweight yet durable ABS for its louvres, a material often used in high-endurance applications such as appliances, car parts and helmets. Stiles, rails and frames are made from a sustainable engineered wood composite (EWC). Woodlore Plus's advanced design facilitates wider panels, more colour choices and a waterproof option. Now Woodlore Plus (G2) louvres are 15% thicker and have engineered timber louvre inserts. These new product features combined with an enhanced EWC stile core make the Woodlore Plus shutter program stronger, tougher and more versatile than ever before.



Woodlore Plus Waterproof

- 100% made from lightweight and hardwearing ABS
- Fully waterproof panels and frames suitable for bathrooms, kitchens and laundries
- Stainless steel hardware which won't rust or corrode
- Same great look and features as Woodlore Plus
- Featuring the invisible Easy Tilt drive option
- Perfect for busy family lifestyles where knocks and bumps are likely to occur
- Wide choice of 26 solid colours
- Available in 5 louvre sizes, 47mm, 63mm, 76mm, 89mm and 114mm

Designed specifically for wet areas around the home, Woodlore Plus Waterproof remains amazingly lightweight and achieves the perfect balance between beauty, strength and durability. Also, if you have specific windows that you like to keep open for ventilation 24/7 this program will endure the unexpected shower of rain or constant moist sea breeze.

Brightwood

- Creating affordability by blending premium hardwood panels with EWC frames
- Wider panel specifications (1066mm), and more layout configurations achievable
- Choice of 27 colours plus custom colour option
- Featuring the invisible Easy Tilt drive option
- Available in 5 louvre sizes, 47mm, 63mm, 76mm, 89mm and 114mm
- Can be used as a door option
- Now available in special shapes

100% hardwood panels using premium quality timbers from qualified sustainable sources. Mounting frames are made from Woodlore Plus's robust EWC material finished with a paintable extrusion polymer coating. The panels and frames are perfectly colour matched with the same high quality paint finishes applied to the Norman premium timber shutter range. This program combination provides a seamless shutter solution providing home owners with an affordable high quality painted timber shutter with great looks, expansive panels and durable performance.

The use of specialised premium hardwoods makes the shutter panels lighter allowing the ability to hinge multiple panels together and also craft special shapes for unique windows and doors. Brightwood, combining beauty with functionality, all wrapped up in our entry-level hardwood shutter range.

Normandy

- 100% premium hardwood shutter, finished with beautiful solid colours and luxurious timber stain options
- Sustainably sourced from well managed hardwood forests and tree plantations
- Available in 51 stunning paint and stain colours plus custom colour options
- Multiple hand sanding and finishing for the finest crafted furniture finish
- Wider panel options (1095mm) to create more open views and installation options
- Utilizes wood's natural elegance, excellent strength to weight ratio and insulation properties
- Featuring the invisible Easy Tilt drive option
- Available in 5 louvre sizes, 47mm, 63mm, 76mm, 89mm and 114mm
- Wide range of special shapes and options available

NATURAL BEAUTY OF PREMIUM HARDWOOD

Sophisticated and unique, take up residence with Normandy shutters, displaying wood's unique natural beauty and luxury. Normandy is made from solid timber sourced from sustainably managed hardwood forests and plantations. Normandy stained shutters are made from Phoenixwood, which offers a rich natural grain showing both depth and character. Phoenixwood also offers one of the highest strength to weight ratios among all types of wood and non-wood shutters. All Normandy hardwoods are prescription wood conditioned for long term stability in service. There is nothing quite like the natural elegance of Normandy premium hardwood shutters.

Ultra

- Norman's flagship wood shutter – The world's finest wood shutter, period...
- 100% premium-selected and sustainably managed hardwoods
- Made with 30% more wood than Normandy to create the most robust and widest single panel options (up to 1219mm wide)
- Painted with 30% more paint than Normandy with 2 additional hand sanding and finishing sequences for that ultimate furniture finish
- Featuring the invisible Easy Tilt louvre operation
- Available in 5 louvre sizes, 47mm, 63mm, 76mm, 89mm and 114mm
- Over 50 stunning paint and stain colours

From durability to style options to build quality, Norman Ultra represents the culmination of our 20-plus years of shutter innovation and craftsmanship. By incorporating our very best ideas, design and knowledge - along with our best materials, you'll see why we're proud to call Ultra our flagship shutter.



Ultra is made from 100% premium hardwoods, each species carefully chosen to make the very best shutter components. Made with 30% more wood, Ultra is bigger, stronger, and more solid and robust. Ultra makes the statement you have arrived, cool, calm and collected. With 30% more paint, followed by multiple hand sanding and finishing, Ultra embodies quality not unlike the finest heirloom furniture, displaying a contemporary elegance that will impress friends and neighbours alike.

Ultra Hinge



- Industry's number 1 most robust shutter hinge
- Made to perform for a lifetime
- High end satin finish
- Fully adjustable
- Concealed invisible design for contemporary clean look

Shutter Styles

Shutters are the most versatile of all window covering products. No matter the size or shape of your windows, we're confident there is a Norman shutter to suit.

Full Height

Our most popular style that creates a real sense of scale and clean lines from top to bottom. Just simple and elegant.



Café Style

Adding a touch of continental style the panels only cover the bottom half of your windows. Allows plenty of light to fill your room while maintain a degree of privacy.



Double Hung

By operating the top and bottom panels independently you have ultimate control over the light and your view and privacy.



Track and Doors

Adding top and bottom tracks allows you to create wide stunning window and door openings that offer ultimate functionality. Choosing from Norman's many bi-fold or bypass tracked options you can operate multiple panels in one smooth motion. Options include 90° and 180° bi-fold and open and closed louvre bypass systems.



Bay Windows

Beautiful square and Victorian bay windows can be transformed by made to measure full height, double hung or Café style Norman shutters.



Solid Panels

For a more traditional finish to your windows, solid panels block out the light when closed and provide an additional barrier to the outside elements. Also Norman offers options to mix solid segments with louvre segments throughout the height of the panels. A classic look for older period homes.



Special Shapes

Even the most unusual of window shapes can be dressed with Norman shutters. Popular styles include arches, circles, gables and triangles. Feature windows have never looked so good.





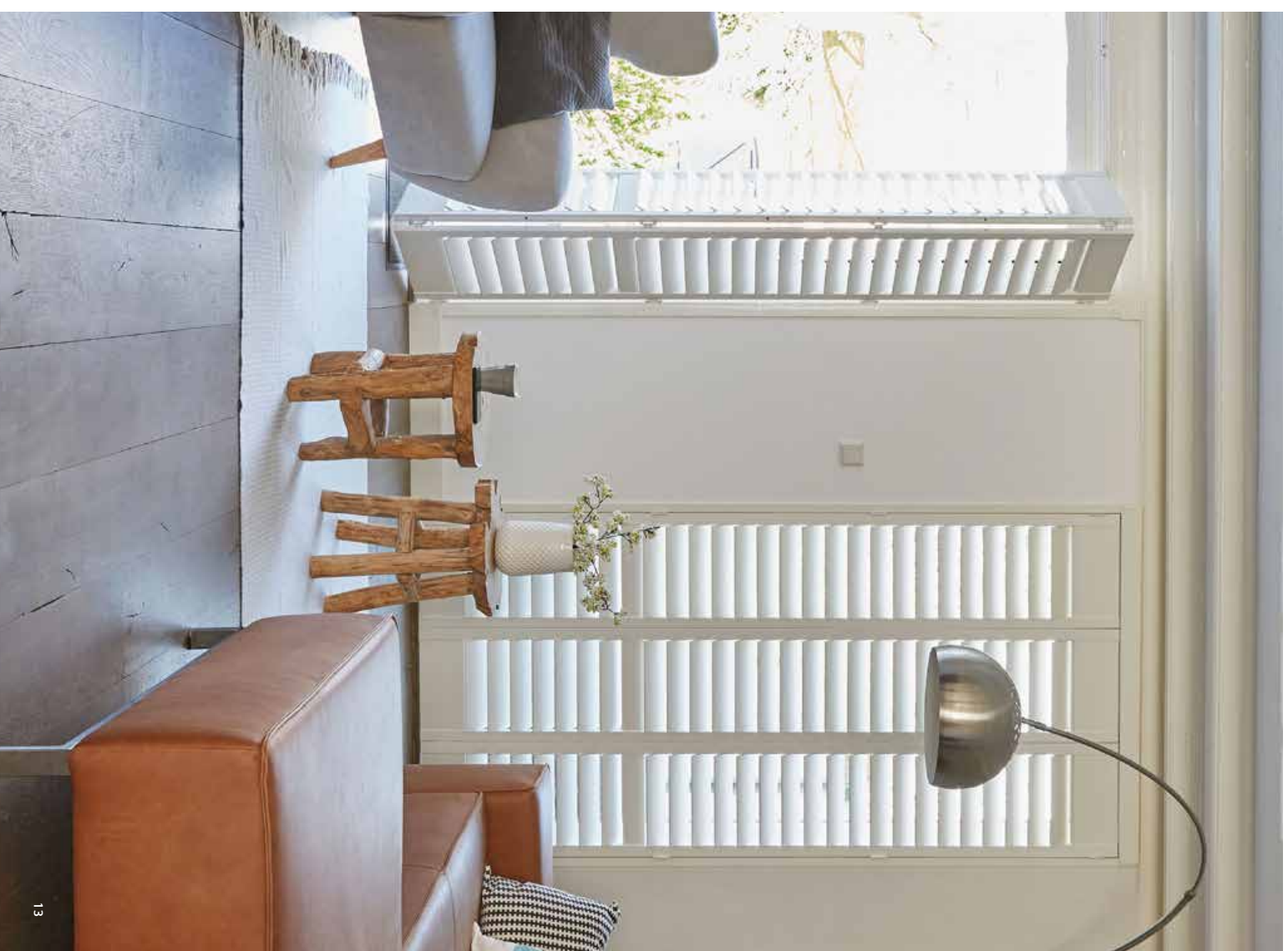
PerfectTilt Motorisation

Home Automation with Flair

- iPhone and iPad control with hub (optional)
- Quick response to tilt commands
- 8 pre-programmed louvre positions and one custom position with remote
- Effortlessly dial over 30 custom louvre positions
- Louvres can be tilted by hand, remote or app (via hub) without the need for flipping switches nor the risk of damage because of incorrect switch settings
- Two long-lasting rechargeable lithium-ion batteries per module, which can last up to one year on a single charge via USB
- High efficiency solar panel included for extending battery charge
- Water repellent module units
- Built-in jam protection for child and pet safety

Put the power to command your shutters in the palm of your hands. Control a single shutter, a room of shutters or every shutter in your house - exactly how you want it. The PerfectTilt™ App tracks battery power and when paired with the hub option, enables control through iPhone or iPad. The ultimate in seamless and effortless control, PerfectTilt includes an auto switch feature that changes tilt methods automatically. Go from iPhone/iPad tilt to manual hand tilt, to tilt with the premium metal remote control featuring dial adjustment. There is no need to flip any extra switches or to take any extra steps. Plus, the optional repeater increases signal range for reliable control on large homes.

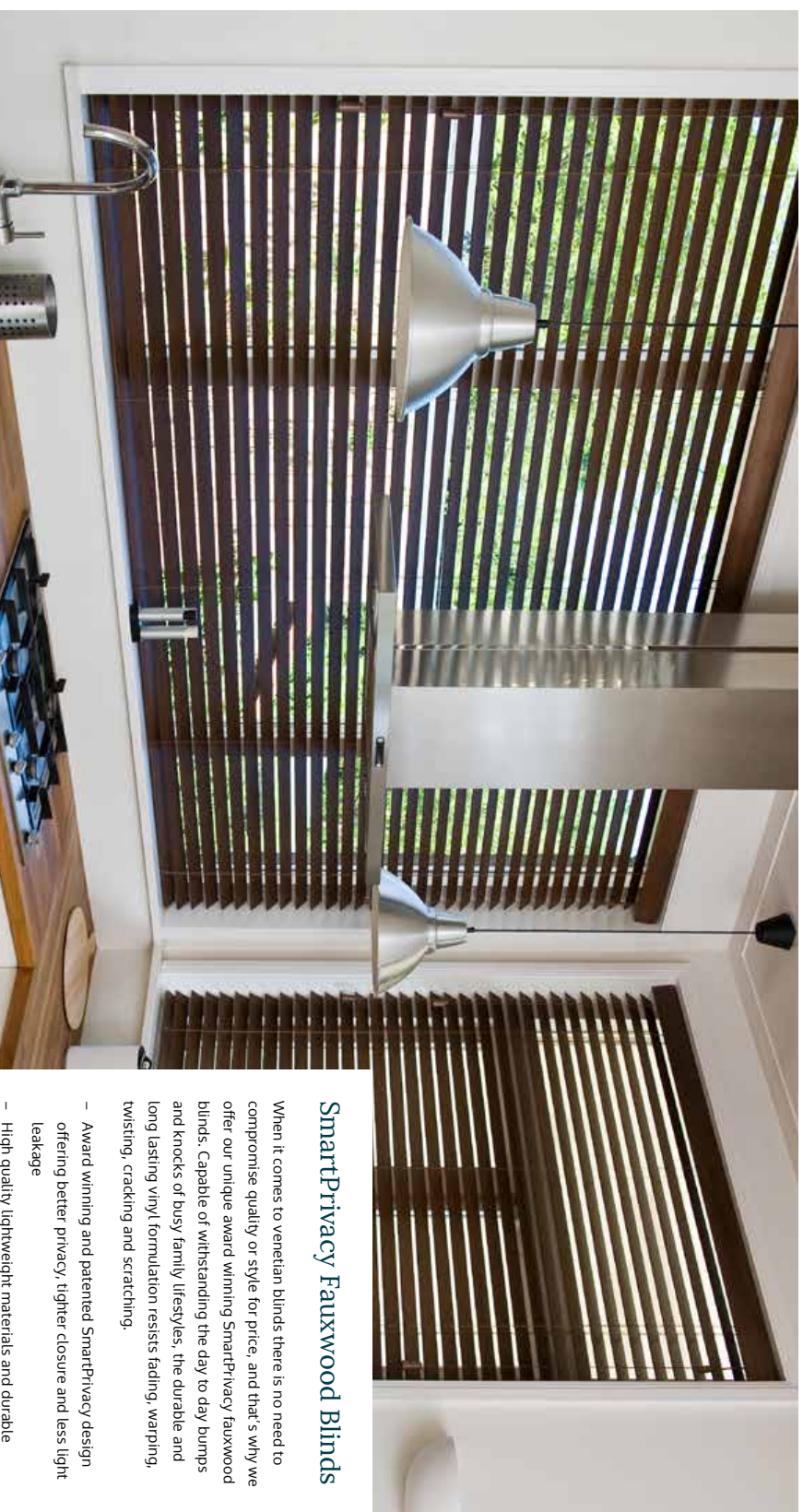
Each shutter also includes a solar panel to extend battery life, sometimes for years on a single charge when installed in exceptionally sunny locations - for the ultimate in energy efficiency. Plus, get extra child and pet safety with the built-in sensor that stops louvre rotation when needed.



SmartPrivacy Blinds

Norman SmartPrivacy blinds are made to be enjoyed by the whole family. Our products feature child-safe designs, utilize non-toxic materials and meet stringent international safety standards. Choose 50mm or 63mm slat widths and either colour coordinated ladder cords (SmartPrivacy models) or ladder tapes in solid colours or decorative designs (traditional centre slot models).

SmartPrivacy blinds include a wide range of operating options from corded, cordloop, cordloop SmartRelease and cordless operation. All designed for ease of operation and ultimate light and privacy control. Headrail materials include steel (to be dressed by multiple valance options) and valance free decorative aluminum and PolyDeco rails, both available in a wide range of finishes and colours.



SmartPrivacy Wood Blinds

Touch real wood with Norman's SmartPrivacy wood blinds and add a natural element of style to any décor. Available in a range of contemporary solid colours and timber stain finishes which can be designed to blend in with your décor or create a contrasting feature.

- Hand crafted using lightweight Phoenixwood which reveals the timber's authentic character and texture
- Long lasting paint and stain finishes to resist fading in the harsh Australian sun. Also, option to finish the slats with the naturally derived OSMO finishes
- Patented 'SmartPrivacy' designed slats offering snug closure and none of those undesirable centre slot holes that let in unwanted light and the stare of noisy neighbours.

- Lift and tilt operation offers the ultimate control for privacy, view, light and ventilation
- Contemporary matching timber valance is included with the premium range
- Solid and decorative cloth ladder tape options
- Multiple headrail options including steel and decorative aluminium and PolyDeco options
- Patented 'Insta-lock' cord lock system combined with lightweight Phoenixwood to provide an easy to operate blind
- Superior child safe cordless option certified "Best for Kids" for the PolyDeco headrail option and enhanced child safety features on other operating systems
- Elegant and flush designed bottom rail eliminating any hang up in the smooth operation of the blind and protrusion that may damage the window sill over time

SmartPrivacy Fauxwood Blinds

When it comes to venetian blinds there is no need to compromise quality or style for price, and that's why we offer our unique award winning SmartPrivacy fauxwood blinds. Capable of withstanding the day to day bumps and knocks of busy family lifestyles, the durable and long lasting vinyl formulation resists fading, warping, twisting, cracking and scratching.

- Award winning and patented SmartPrivacy design offering better privacy, tighter closure and less light leakage
- High quality lightweight materials and durable construction incorporating the patented 'Insta-lock' cord lock system for ease of operation
- QUV colour fastness rating higher than industry standards to resist fading and yellowing under the harsh Australian sun
- Slat are made from a special lightweight and safe PVC formulation. They are waterproof, fire resistant and hardened to resist warping, twisting, cracking and scratching
- Multiple headrail options including steel and decorative aluminium and colour coordinated PolyDeco options
- 2 contemporary matching valance options are available with the steel headrail
- Solid cloth ladder tape options are available
- Superior child safe cordless option certified "Best for Kids" for the PolyDeco headrail option and enhanced child safety features on other operating systems



Portrait Honeycomb Shades

With rich materials, and an even richer history, Norman Portrait Honeycomb Shades feature award-winning designs, exclusive options and industry leading innovation.

With a wide selection of fabric colours, textures and materials to suit all decors, rooms and shading requirements, Portrait's unique honeycomb structure creates a stylish way to keep your home cooler in summer and warmer in winter. Portrait Honeycomb shades also offers excellent sound absorption properties to reduce street noise and dampen sounds in rooms with hard flooring and energetic children.



Luxury of Choice

Portrait features almost 500 fabric options, 5 cell sizes and an extensive array of lifting systems, including child-safe cordless, vertical and motorised options. Plus, award-winning solutions such as SmartFit, DecoFlex, Cordless Top-Down/Bottom Up, and Day & Night. Portrait has a stylish answer for any lifestyle or light control need. They look, feel and perform like no other window covering option.

Features and Benefits

CHILD SAFE AND FLAME RESISTANT

Our cordless options are certified "Best for Kids" and you will feel like a magician when operating the shades leaving your family and friends speechless and convinced you are playing tricks. Also, the unique cord release device in our corded options has been specifically designed to prevent entanglements giving you years of trouble-free operations. Flame resistant fabrics are also available for added peace of mind or situations requiring fire rated decoration products.

SOLUTION BASED DESIGN

With Portrait discover design that is truly cutting edge:

- DecoFlex a decorative light block frame option, offering more effective room darkening and privacy control
- Multiple SmartFit options which offers a slimline direct mount solution for many tricky window and door installations, including a dedicated skylight and sloped window solution that stays flat and true.
- SmartRelease, the proprietary technology that makes daily lowering instantaneous and effortless, especially on larger windows. With a single pull, the shade releases and glides to a closed position automatically - smoothly, quietly and confidently.
- Select from the most popular specialty shapes to provide a honeycomb solution for special shaped windows. Our array of specialty shapes includes arches, quarter round, triangles and more
- Palladian Shelf, the innovative solution creates a decorative mounting surface inside an arched window so a rectangular shade can be installed beneath an arched specialty shape shade.





ENERGY SAVINGS

By combining unique cell design and advanced materials, Portrait is made to provide superior insulation. Experience fabric technologies that will make you feel more comfortable and reduce your home's energy costs. Norman's honeycomb shades can significantly protect your home from circulation of indoor and outside air which causes energy loss - to create a more comfortable living environment year-round, while helping you leave a smaller carbon footprint.

	NO HONEYCOMB SHADES			WIDTH 45MM DOUBLE CELL LIGHT FILTERING		
				ROOM DARKENING		
Air Conditioner Load	37,715 MJ	27,863 MJ	24,859 MJ			
Power Consumed	3,492 kwh	2,580 kwh	2,302 kwh			
Energy Savings	None	26.1%	34.1%			

FLEXIBLE LIGHT CONTROL OPTIONS

Opacities from sheer, light filtering to room darkening. Sheer fabrics are perfect for day and night shades; a light screen sheer during the day and a room darkening fabric for extra light and privacy control at night.



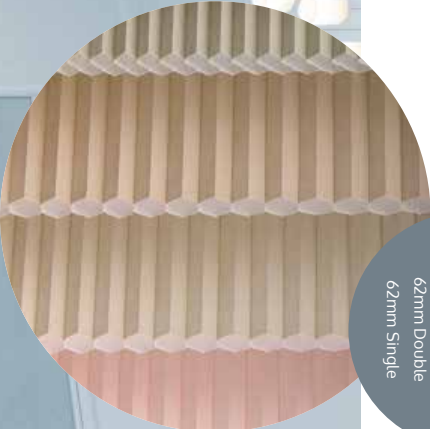
Portrait Honeycomb Shade Options

UV BLOCKAGE BY FABRIC TYPE

Room darkening fabrics offer homeowners the ability to significantly block out the sunlight reducing up to 100% UV light. While light filtering fabrics have a range of UV transmission and can create softer lighting for any room in the home. With Norman's sheers, block as little as 49.9% of UV light offering a screened view of the streetscape and a degree of daylight privacy.

Sheer:	49.9% - 71.5% UV Blockage
Light Filtering:	88% - 97% UV Blockage
Room Darkening:	100% UV Blockage

- FABRIC CELL SIZES
- 25mm Single
 - 45mm Double
 - 45mm Single
 - 62mm Double
 - 62mm Single





SHADES

LIFT SYSTEMS

Select from Norman's innovative shade systems featuring improved hardware and lift technology. There's a perfect shade system for no matter what your lifestyle has in store.

MOTORISED OPTIONS
Raise or lower from up to 20m away, even on Day & Night Shades or Top-Down shades. Our motorisation delivers convenient and consistent performance, and comes with an intuitive remote control, along with quiet, energy efficient motors.

CORDLESS



SMARTRISE™



CORDLESS TOP DOWN/
BOTTOM UP



CORDLESS DAY & NIGHT



SMARTFIT™



SMARTFIT™ FOR
SLOPED WINDOWS



DECOFLEX™

CORD LOOP



CORD LOOP &
SMARTRELEASE™



CORD LOOP TD



CORD LOOP
DAY & NIGHT

CORDED



CORDED



CORDED TOP DOWN/
BOTTOM UP



CORDED
DAY & NIGHT

MOTORISED



MOTORISED SMARTRISE™



MOTORISED TOP DOWN



MOTORISED DAY & NIGHT

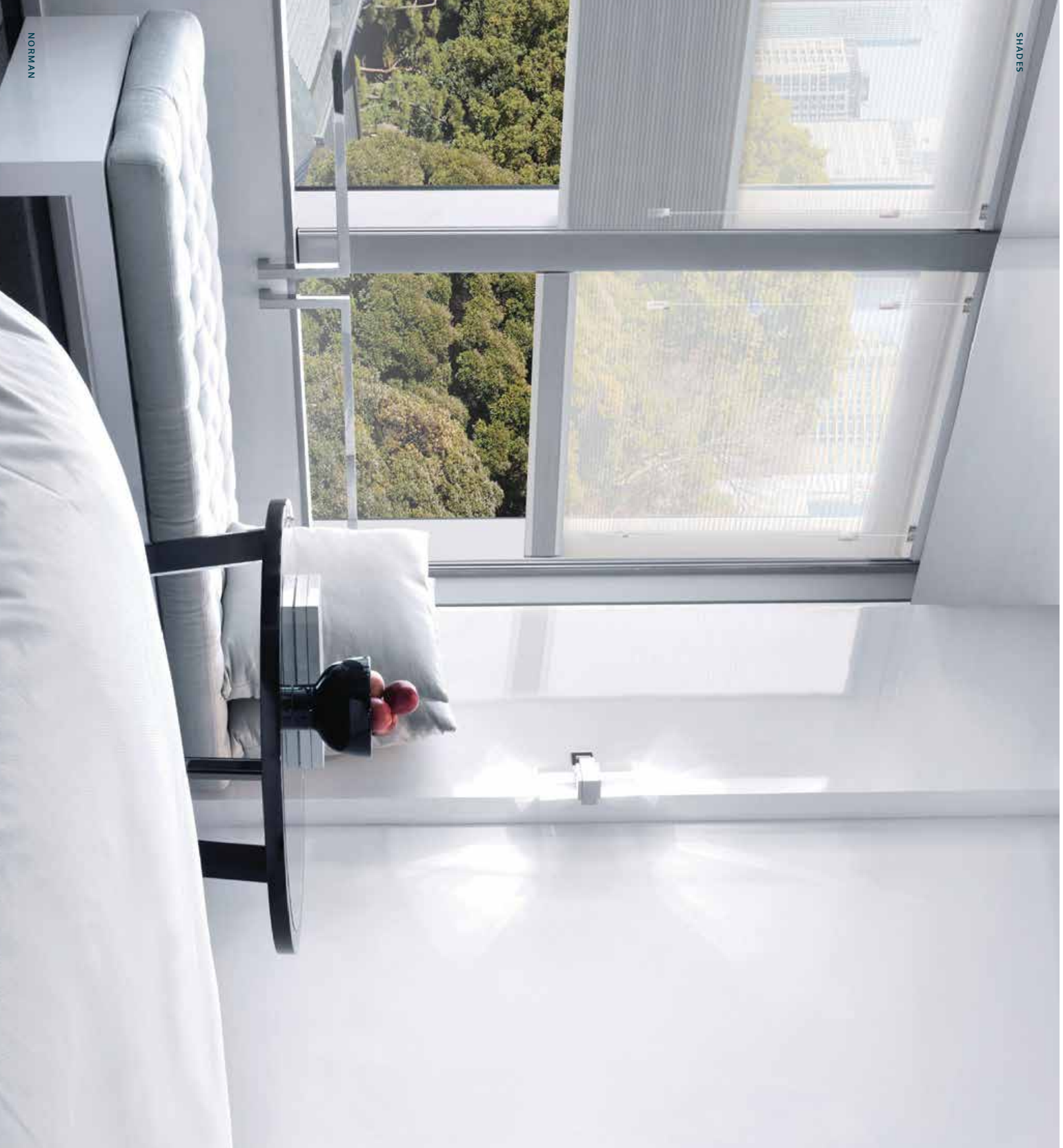
VERTICAL MODELS



PATIO DOOR VERTICAL



PATIO DOOR VERTICAL
DAY & NIGHT



How to choose the perfect Portrait Shades?

CELL SIZE

Small or large?

A gallery of colours and opacities in five unique cell sizes from small to large. Smaller cells offer a more traditional pleated shade look giving your room a snug and cosy feel. Larger cells are great for larger windows and doors giving your décor a more contemporary and elegant edge.

LIGHT EFFECT

How much light and privacy do I need?

Select the amount of day light that is required in your room, your level of privacy and your view. Choose from translucent sheer to room darkening fabrics. Alternatively, pick two fabrics with different opacities for the day and night shade. For bedrooms and bathrooms especially consider the privacy and light control during the night and day.

INSULATION

Single or double cell?

The unique construction of our honeycomb insulates your home from cold during winter and heat in summer to lower your energy bills. Choose from single or double cell for your unique design and energy efficiency needs. However, for the most effective insulation, select double cell.

LIFT SYSTEMS

How do you want to operate the shade?

Consider if you need a single fabric or multiple fabrics for different opacities (day and night shade) then how you want the shade to function. Do you need the fabric just to be the standard bottom up or do you need a moving fabric stack (top down bottom up) to easily adjust your, light control, view and privacy. Also, you have the choice of simple corded or for larger blinds consider cord loop or motorized. If child and pet safety is a concern in your home, or you don't want to see any dangling cords, then choose one of the many Portrait cordless options available.

Norman Portrait honeycomb shades offer the widest range of fabrics and operating systems available on the market. Also, an extensive list of specialised options to allow you to customise your shades to make them perfect just for you.

We Care

At Norman, product safety is the cornerstone of everything we build.

As an active participant in the WCMA 'Best for Kids' certification program, all Norman window furnishings with the 'Best for Kids' designation have been rigorously tested. Moreover, all Norman products are free from lead and soluble heavy metals. They also meet or exceed strict International and European standards for off-gassing of harmful chemicals.

Sustainability and reducing our footprint on the environment are also a core philosophy of all products manufactured by Norman. Materials that are recyclable or made from renewable resources are always our first choice and consideration is taken from the forest through to landfill - they won't harm your family or the environment.

No Questions Asked Warranty*

We're pleased to offer Norman's 'No Questions Asked (NQA) Warranty' giving you real confidence when purchasing quality Norman shutters, blinds and shades.

Australian customers supplied with quality Norman custom made window covering products now have unprecedented peace of mind with the only 'NQA Warranty' offered in the market, the program that even covers life's little mishaps. If you break it, we'll offer a one-time repair or replacement, for free with no questions asked!

Norman's NQA warranty provides consumers a one-time repair replacement for the same product should it become damaged, defective or inoperable after the point of installation. This NQA warranty excludes battery

replacement, all motorisation and colour-fastness on all products.

The warranty applies for the following periods to all shutter programs, honeycomb shades and SmartPrivacy wood and fauxwood blinds.

Shutter Warranty	5 years
Honeycomb Shade Warranty	3 Years
SmartPrivacy Wood Blinds	3 Years
SmartPrivacy Fauxwood Blinds	2 Years
All non-stainless steel components in shutters, shades and blinds	2 Years

*Please go to our website to reference the additional warranty terms and conditions.



NORMAN®
SHUTTERS. BLINDS. SHADES.

